



INTERMOOR

**INTER-M[®]
PULSE**

**In-Line
Tension
Monitoring**

an **ACTEON** company



InterMoor Ltd.

Tern Place House
Tern Place
Bridge of Don
Aberdeen AB23 8JX
UK
T: +44 (0)1224 701830
F: +44 (0)1224 701831

Headquartered in the United States,
InterMoor has facilities
across the globe:

- Angola
- Brazil
- Malaysia
- Mexico
- Norway
- Singapore
- United Kingdom
- United States

For more information
on InterMoor:

www.intermoor.com

info@intermoor.com

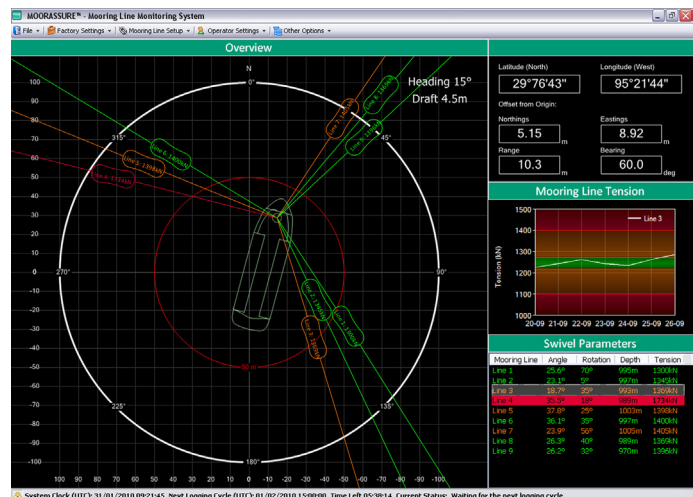
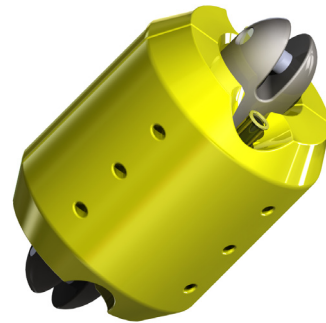
Direct In-Line Tension Monitoring

In conjunction with Pulse Structural Monitoring, InterMoor has taken its H-Link manufacturing knowledge and combined it with the very latest mooring monitoring technology.

Connecting mooring chains together, the Inter-M-Pulse will send to the topside control room the exact tension currently passing through each mooring line.

With the introduction of various sensors, the Inter-M-Pulse can also detail inclination, orientation and the curvature of the mooring line.

- Full history of mooring line
- Acoustic data transmission
- On-demand data upload
- Traffic light alarm system
- Suitable for moored FPSO and MODU



Using **MOORASSURE™** software, the vessel can constantly monitor the data sent topside.