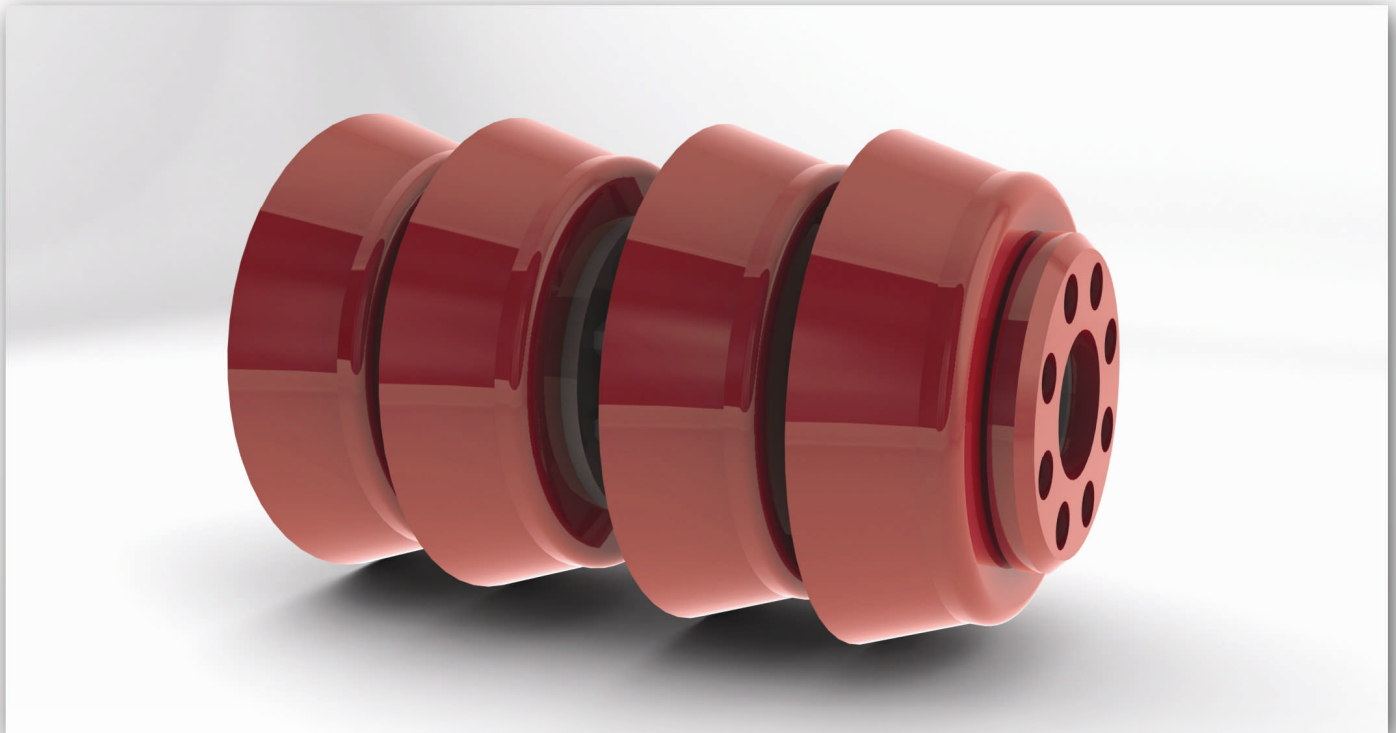


iNPIPE PRODUCTS

DATASHEET - CUP PIGS



Product Description and Functions

iNPIPE PRODUCTS™ Uni-directional Cup Pigs are used in applications such as product separation, batching, displacement, swabbing and line clearance duties. With the addition of accessories, such as brushes, magnets, gauge plates, tracking housings, pluggable by-pass and jetting heads, the cup pig can be used for the commissioning and de-commissioning of pipelines.

With components manufactured from **iNPIPE PRODUCTS™** standard materials, Cup Pigs can withstand distances of up to 700km, dependant on the pipeline condition. If components are manufactured from **iNPIPE PRODUCTS™** Polyplast V systems, Cup Pigs may withstand distances of up to 1000km, dependent on pipeline condition.

Standard Features

- Bodies are manufactured from carbon steel
- Pig Cups are manufactured from Polyurethane
- Cups available in two styles; Standard and Proteus
- Towing eye at each end to facilitate removal
- Multi-bolt and Spindle bodied designs available

Benefits

- Flexible lip allow for minimum by-pass
- Polyurethane mouldings are manufactured in-house to strict quality standards. They have exceptionally good physical and chemical resistant qualities
- High wear and abrasion resistance
- Will traverse full bore valves
- Will traverse barred tees
- Will negotiate to 1.5D bends



iNPIPE PRODUCTS™

Walkerville Industrial Estate, Catterick, North Yorkshire, United Kingdom, DL9 4RR
www.inpipeproducts.com - +44 (0) 1748 834 577