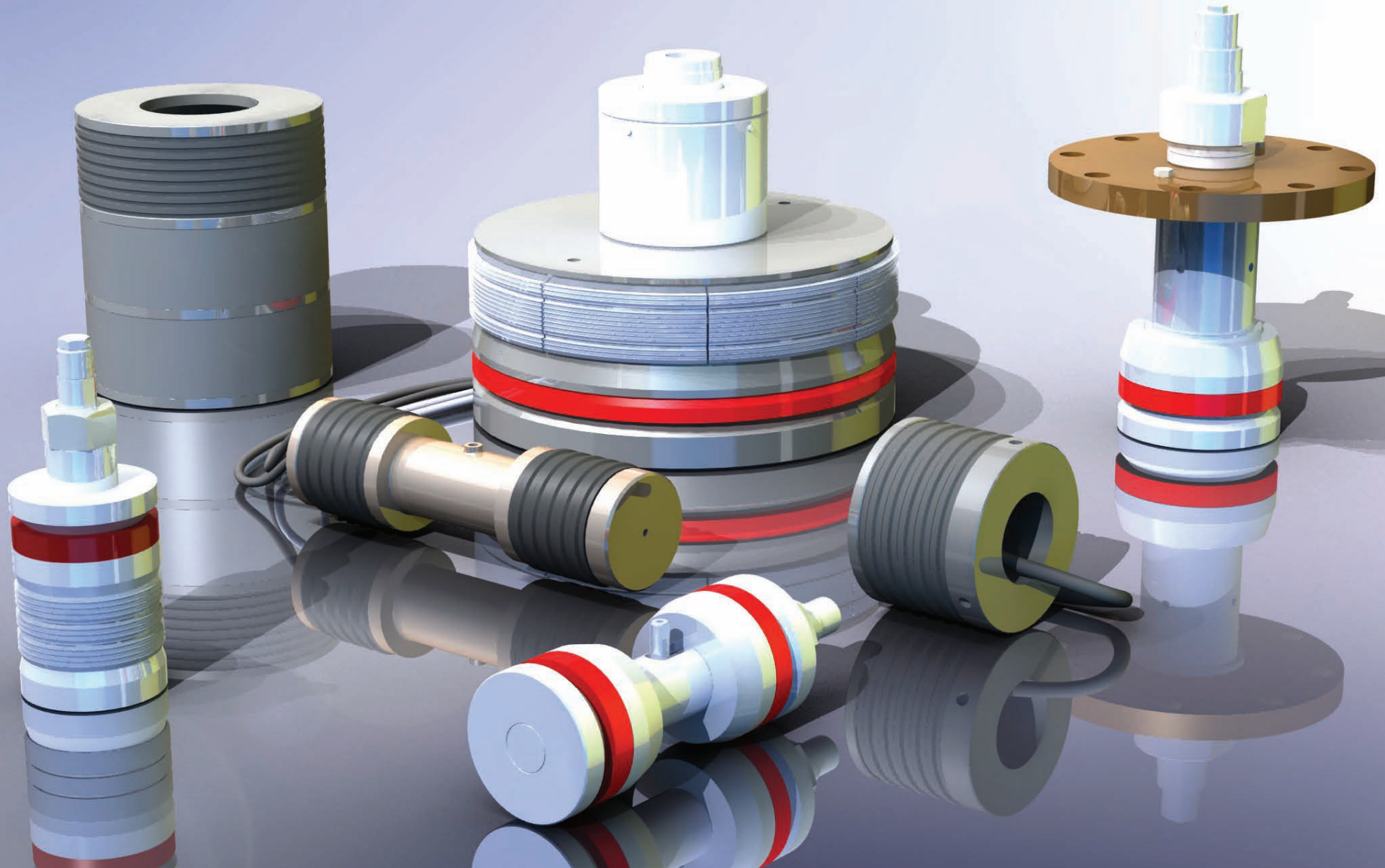


# INPIPE HIRE BROCHURE PRODUCTS AND SERVICES



# CONTENTS

2 - Services and Contents

4 - High Pressure Plug

5 - Dual Tool

6 - Flange Weld Tester

7 - Medium Pressure Plug

8 - Internal Weld Tester

9 - Auxiliary Products for Hire

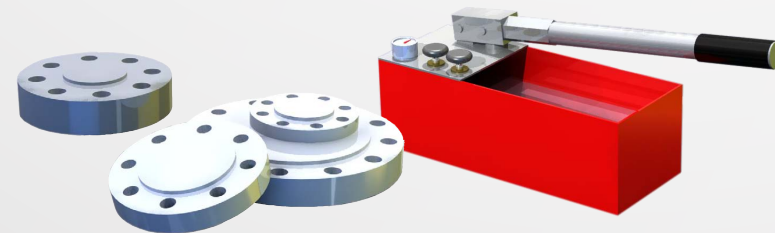
10 - Product Specifications

# SERVICES

The dedicated **INPIPE HIRE™** team has a combined total of 30 years **INPIPE PRODUCTS™** service and 50 years in engineering. A prompt and professional service is provided by the skilled support team who are able to respond to immediate demand and emergency situations. Competitive prices are available for long and short hire periods while we ensure that client requirements are fulfilled.

Our fleet of approximately 600 items comprises:

- Posi-Seal Plugs & Testers
- Flange Weld Testers
- Internal Weld Testers
- Self-Centralising Bungs
- Blind Flanges
- Plugs for high, medium and low pressure environments
- Dual Tool and Twin-Tyred Posi Plug for enhanced safety in hydrocarbon gas areas
- Hoses, Pumps and Gauges
- Most items are available ex-stock



Auxilliary test products available for hire on request

International Pipeline Products Limited VAT number: 409 251 761

## HEALTH AND SAFETY AT WORK ACT 1974

This equipment is supplied with safety features incorporated so that as far as is reasonably practicable it does not present a risk to health when properly used for the purpose for which it is intended. Because the manufacturer has no control over the method of operation, the responsibility for ensuring that the equipment is not operated in a manner which is unsafe or is a risk to health rest entirely with the user. **INPIPE PRODUCTS™** reserves the right to alter the specifications without notice

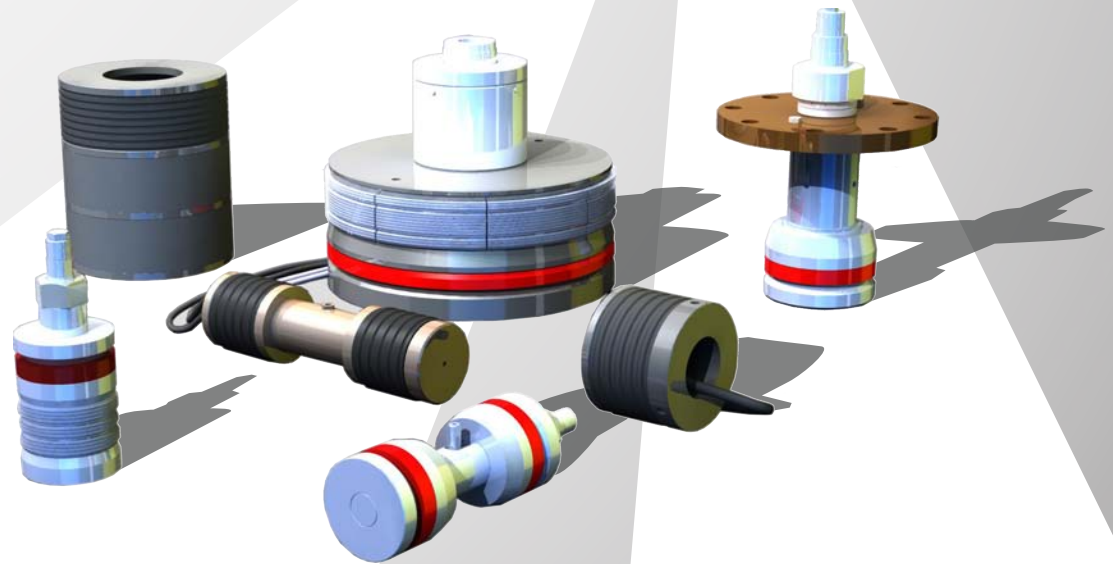
**INPIPE HIRE™** has the latest in cutting edge in-house design and manufacturing capabilities. This facilitates a rapid response for client needs whether using in-house stock, made to order products or refurbishment between hires.

At our headquarters, we have a full range of test facilities and a comprehensive range of test rigs to allow for full testing before items are despatched. All orders include a hydrostatic test certificate which provides full traceability. Technicians with full training, and where required, offshore certification, are available to oversee installation and use of our equipment on site.

Our patented Posi-Seal is incorporated in most plugs and testers. These are of proven and renowned design and reliability. Technical information for all of the **INPIPE HIRE™** product range is available on request.

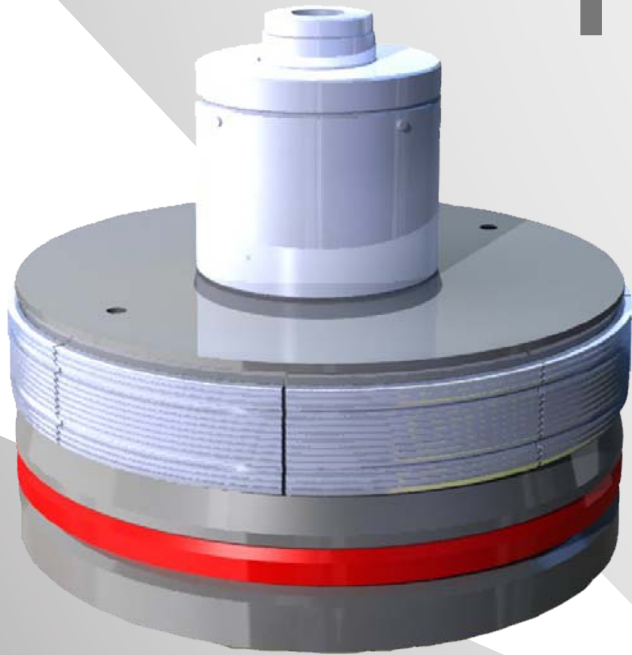
Contact **INPIPE HIRE™** on:

- \* Tel: 01748 834577
- \* Fax: 01748 836349
- \* For further information contact:  
hire@inpipeproducts.co.uk



**INPIPE HIRE™**  
Walkerville Industrial Estate,  
Catterick,  
North Yorkshire,  
DL9 4RR  
Tel (+44) 01748 834577  
Fax (+44) 01748 836349

# HIGH PRESSURE PLUG



The High Pressure Pipe Plug is based on the proven principle of expanding an hardened steel segmented vice ring on to the internal pipe surface to hold the stopper in position, at the same time expanding the polyurethane elastomeric Posi-Seal element on to the pipe wall. Designed to an advanced concept in that the segmented vice ring is supported and expanded parallel to the axis of the pipe, by two opposed taper faces, thereby increasing the effective contact area and the higher pressure capability. High quality steel components accurately machined ensure easy operation.

Posi-Seal elements are manufactured from polyurethane and have especially good sealing characteristics and a low compression set. The low hysteresis seal ensures rapid pressurisation.

The ***INPIPE HIRE™*** High Pressure Pipe Plug can be utilised on many applications including on pressure vessels, headers, process plant and pipeline systems. Instructions and hydrotest certificate are supplied.

Reusable and cost effective after more than one application the High Pressure Pipe Plug removes the need to weld sacrificial flanges or end caps. It is also easily installed, simple to use and require no special spanners.

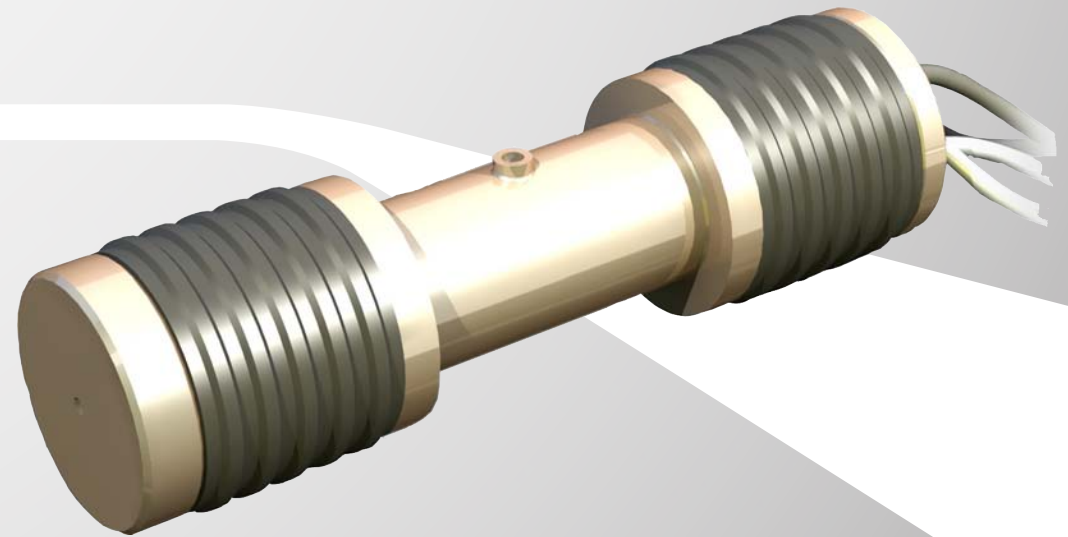
## HEALTH AND SAFETY AT WORK ACT 1974

This equipment is supplied with safety features incorporated so that as far as is reasonably practicable it does not present a risk to health when properly used for the purpose for which it is intended. Because the manufacturer has no control over the method of operation, the responsibility for ensuring that the equipment is not operated in a manner which is unsafe or is a risk to health rest entirely with the user.

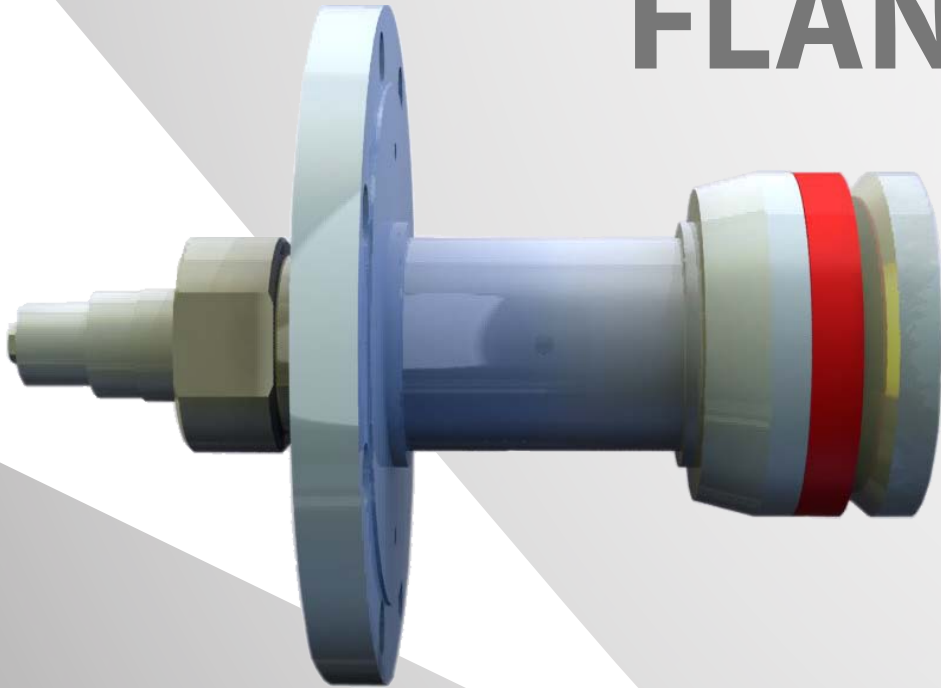
***INPIPE PRODUCTS™*** reserves the right to alter the specifications without notice

The Twin-Tyred Dual Tool, which incorporates the patented **INPIPE PRODUCTS™** Posi-Seal tyre technology, was originally developed at the request of a major UK refinery to create a tool superior to the civil squeeze/compression plugs currently in use, and to enable a safer working environment while carrying out hot/welding work on hydrocarbon pipelines. Since its introduction, the Dual Tool has proved to be great success. The two Posi-Seal tyres are independently inflated to a pressure of 15 bar/g creating a double isolation. The centre cavity is then filled with water and pressurised to 5 bar/g, to prove the integrity of the tyres. In addition the tool is supplied with a centre bypass facility allowing any gases present in the pipeline to be vented away safely. In the event of any build up of pressure in the line, the tool is capable of, and certified to hold a differential pressure of 5 bar. The tool has now been further developed by the **INPIPE PRODUCTS™** design team to enable hydrostatic testing of a new weld by utilising the centre cavity, up to Class 300 or 76.5 bar. With the Posi-Seal tyre's flexibility, the Dual Tool can handle both pipe ovality and excessive weld beads, and can be used to hydrostatically test welds up to Class 300. The tool is supplied complete with stainless steel braided hoses, gauges and isolation valves. As an added bonus the Dual Tool can be used in a range of pipe schedules. The Dual Tool has been so successful that it is now specified into the operating procedures at a number of UK and Dutch refineries. Due to the flexibility of the seal and ease of use, **INPIPE HIRE™** considers this tool to be the best on the market in helping to create a safer welding environment, and reducing operational time by performing "two jobs with the one tool".

# DUAL TOOL



# FLANGE WELD TESTER



The Flange Weld Tester is based on the well established principles used in the design of the Posi-Seal stopper. Utilising accurately machined high quality steel components, easy operation is ensured. Polyurethane is used to manufacture the Posi-Seal element which has particularly good seal characteristics and low compression set.

The low hysteresis seal ensures rapid pressurisation.

Minimal test water volume is required which reduces operational cost. The Flange Weld Tester allows safe economical testing of single welds and is especially suitable for testing additional or replacement flange connections. Easily installed and simple to use, the Flange Weld Tester is self locating, easily removable on completion of test and requires no special spanners. The ***INPIPE HIRE™*** Flange Weld Tester can be utilised for many applications including pressure vessels, headers, process plant and pipeline systems.

Instructions and hydrotest certificate are supplied.

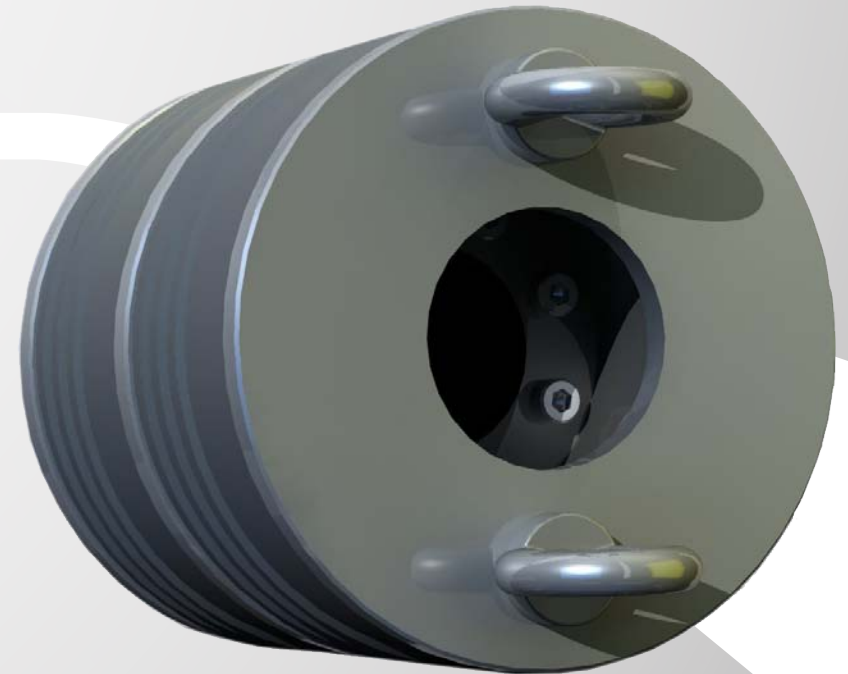
## HEALTH AND SAFETY AT WORK ACT 1974

This equipment is supplied with safety features incorporated so that as far as is reasonably practicable it does not present a risk to health when properly used for the purpose for which it is intended. Because the manufacturer has no control over the method of operation, the responsibility for ensuring that the equipment is not operated in a manner which is unsafe or is a risk to health rest entirely with the user.

***INPIPE PRODUCTS™*** reserves the right to alter the specifications without notice

The Medium Pressure Pipe Plug features the proven principle of the **INPIPE PRODUCTS™** monolithic inflatable polyurethane tyres: It is easily installed, operated and removed from the pipe after use. Ribbed tyres ensure a positive seal and circumferential high friction bands are incorporated at each side of the sealing area to prevent differential pressure from moving the plug.

Large diameter plugs feature the multi-tyre design – independent inflation systems. Higher differential pressures may be effectively sealed and plugged using specially designed stoppers. We recommend tyres are filled and pressurised using water or water/glycol mixture.

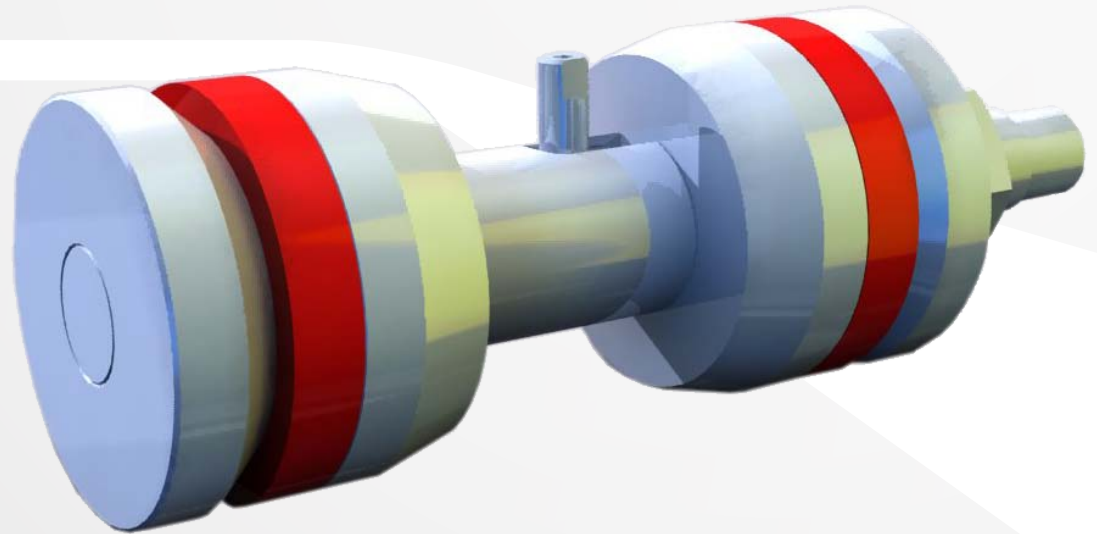


# MEDIUM PRESSURE PLUG



**INPIPE HIRE™**  
Walkerville Industrial Estate,  
Catterick,  
North Yorkshire,  
DL9 4RR  
Tel (+44) 01748 834577  
Fax (+44) 01748 836349

# INTERNAL WELD TESTER



The Internal Weld Tester is based on the well proven principles incorporated in the design of the Posi-Seal stopper and comprises of high quality steel components accurately machined to ensure easy operation. The Posi-Seal element is manufactured from polyurethane and has especially good seal characteristics and low compression set. Rapid pressurisation is ensured by the low hysteresis seal. Especially useful for hydrostatic testing of additional or replacement welds and flange joints, the Internal Weld Tester allows safe economical testing of single welds. Minimum test water volume is required which actively reduces operational costs.

The Internal Weld Tester is easily installed and simple to use. It requires no special spanners on standard sizes. Furthermore, it can be utilised for many applications including on pressure vessels, headers, process plant and pipeline systems. Hydraulically actuated units recommended for sizes above 12" and where remote operation is required.

Instructions and hydrotest certificate are provided.

## HEALTH AND SAFETY AT WORK ACT 1974

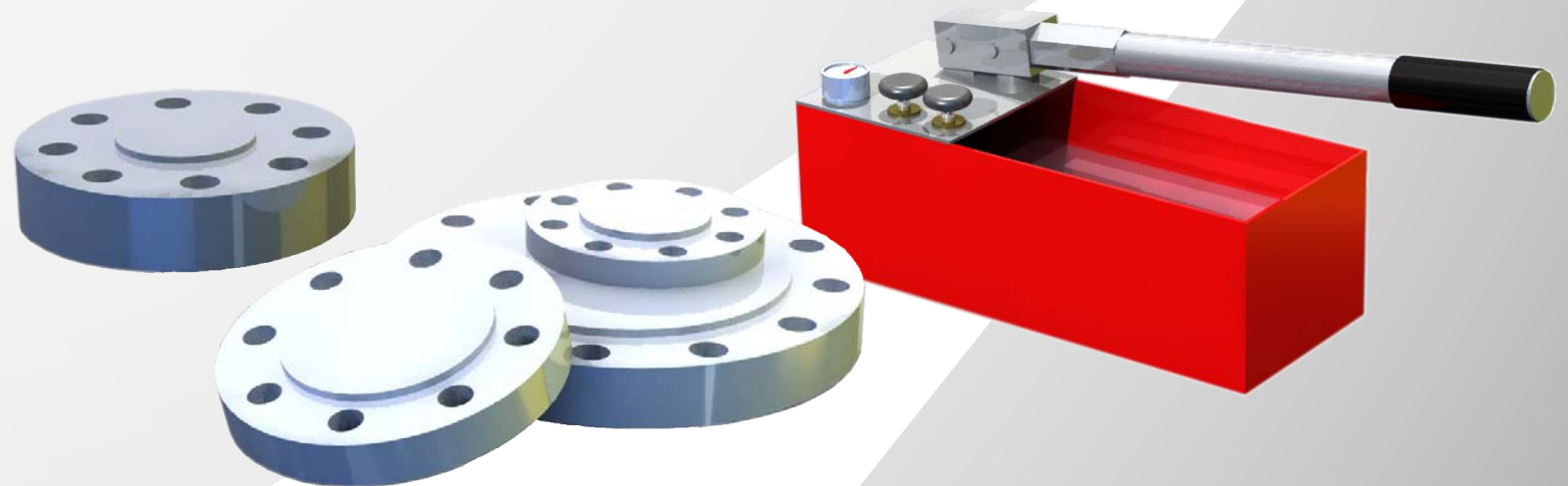
This equipment is supplied with safety features incorporated so that as far as is reasonably practicable it does not present a risk to health when properly used for the purpose for which it is intended. Because the manufacturer has no control over the method of operation, the responsibility for ensuring that the equipment is not operated in a manner which is unsafe or is a risk to health rest entirely with the user.

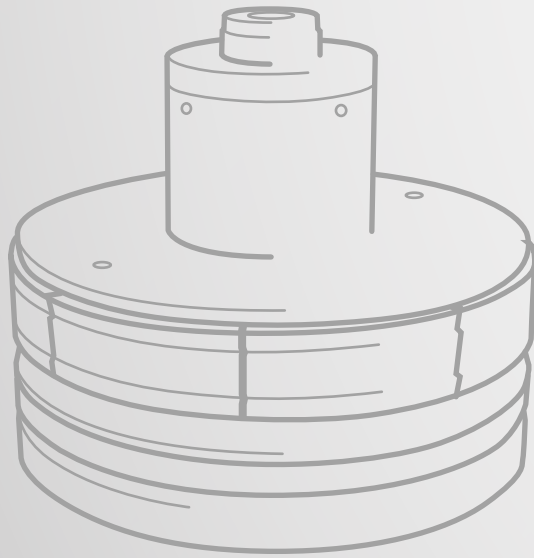
**INPIPE PRODUCTS™** reserves the right to alter the specifications without notice

# AUXILIARY PRODUCTS

In addition to our test products, **INPIPE HIRE™** offer a full range of products to compliment the testers and enable full testing of a pipeline without being tied into a purchase. These additional items are always available at competitive prices and include blind flanges, hoses and pumps. These items are tested on a regular basis and are proven within the **INPIPE HIRE™** fleet.

Where applicable instructions and hydrotest certificate are supplied.

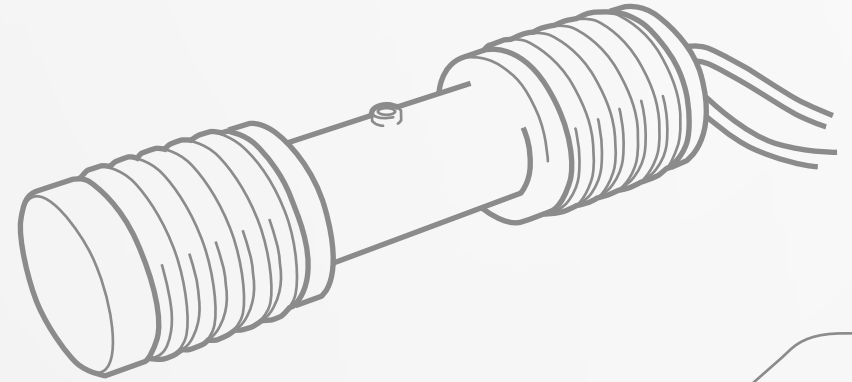




#### High Pressure Pipe Plug

For plugging a section of line: This could be for instances such as hydrostatic testing or pig launching

- Size range from 1/2" to 30"
- High Pressure Pipe Plug is designed to withstand test pressures of up to 450 Barg (depending on size)
- Size and Pressures outside standard range to special order
- Pressurisation/vent through centre by-pass port
- End of hub accepts male or female test connection
- Proven polyurethane Posi-Seal
- Recommended for hydrostatic test applications
- Self-energising after initial seal which is obtained by tightening wing nuts
- Hardened steel vice ring with accurately formed gripper teeth
- Hydraulically actuated version available for remote installation
- Plugs are available for horizontal and vertical applications



#### Dual Tool

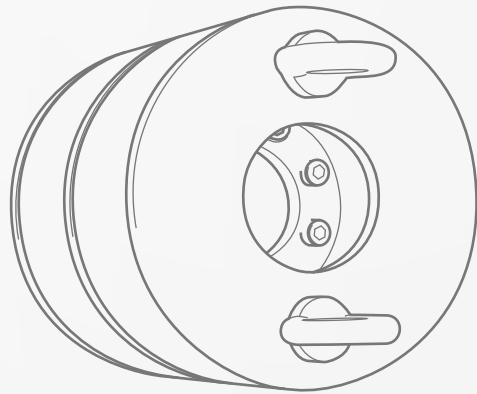
For localised hydrostatic testing of welds between pipe sections

- 1" - 2" sch 160, **INPIPE HIRE™** can offer twin seal compression plugs for isolation only
- 2" through 3" n.s. in compression type seal Annulus cavity can be pressurized up to 29.5 bar.g. Installed correctly, the Dual Tool will hold a line pressure of 5 bar.g
- 4" through 42" n.s. in Posi-Seal type tyre Rear and front tyre inflation 15 bar.g. Annulus cavity can be pressurized up to 29.5 bar.g. Installed correctly, the Dual Tool will hold a line pressure of 5 bar.g

#### HEALTH AND SAFETY AT WORK ACT 1974

This equipment is supplied with safety features incorporated so that as far as is reasonably practicable it does not present a risk to health when properly used for the purpose for which it is intended. Because the manufacturer has no control over the method of operation, the responsibility for ensuring that the equipment is not operated in a manner which is unsafe or is a risk to health rest entirely with the user.

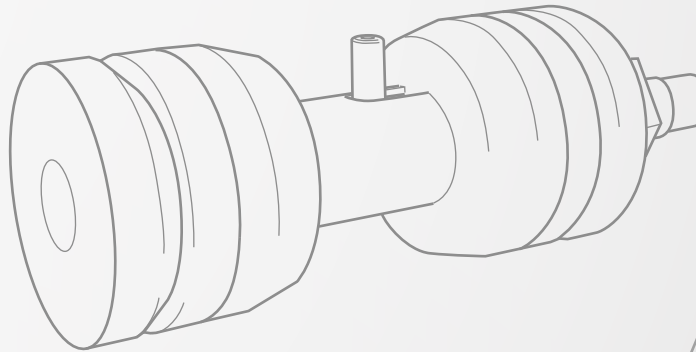
**INPIPE PRODUCTS™** reserves the right to alter the specifications without notice



#### Medium Pressure Pipe Plug

For plugging a section of line in instances such as hydrostatic testing or pig launching.

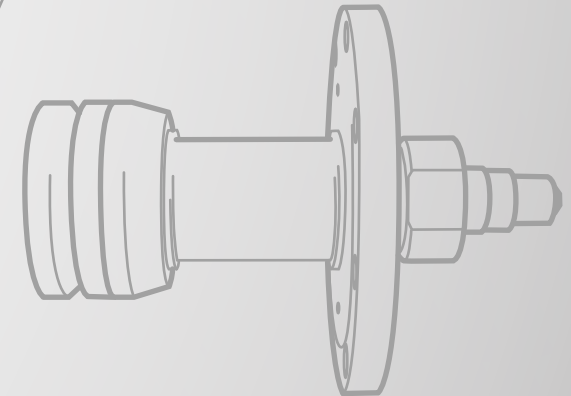
- Size range 6" thru 44"
- Recommended for medium pressure hydrostatic test applications
- Designed to seal and withstand a differential pressure of up to 10 BAR
- Simple single point of inflation through Schrader-type valves
- Proven polyurethane inflatable tyres
- Male or female thread adaptor available
- Non-standard sizes and pressures to special order
- Single tyre plug available as gas seal or barrier for up to 2 bar. available for 6" to 32"
- Available for horizontal and vertical applications



#### Internal Weld Tester

For localised hydrostatic testing of pipeline section welds

- Size range from 1/2"
- Standard pressure range ANSI 900
- Size and Pressures outside standard range to special order
- Pressurisation through centre hub
- Vent incorporated as standard feature
- End of hub accepts male or female test connection
- Proven polyurethane Posi-Seal
- Recommended for hydrostatic test applications
- Hydraulically actuated version available for remote installation
- Available for horizontal and vertical applications



#### Flange Weld Tester

For localised hydrostatic testing of welds between flanges and pipe sections

- Size range from 1/2"
- Standard pressure up to ANSI 1500
- Size and Pressures outside standard range can be manufactured
- Pressurisation through centre hub or fill port
- Vent and drain bleeder plug incorporated as standard feature
- End of hub accepts male or female test connection
- Proven polyurethane Posi-Seal
- Recommended for hydrostatic test applications
- Independent hydraulically actuated models available
- Available for horizontal and vertical applications

N.P.S. (INS)	O/D (MM)	SCH.5s		SCH.10s		SCH.10		SCH.20		SCH.30		SCH.STD		SCH.40s		SCH.40		SCH.60		SCH.XS		SCH.80s		SCH.80	
		W/T	I/D	W/T	I/D	W/T	I/D	W/T	I/D	W/T	I/D	W/T	I/D	W/T	I/D	W/T	I/D	W/T	I/D	W/T	I/D	W/T	I/D	W/T	I/D
1/2"	21.3	1.65	18.0	2.11	17.08					2.41	16.48	2.77	15.76	2.77	15.76	2.77	15.76			3.73	13.84	3.73	13.84	3.73	13.84
3/4"	26.7	1.65	23.4	2.11	22.48					2.41	21.88	2.87	20.96	2.87	20.96	2.87	20.96			3.91	18.88	3.91	18.88	3.91	18.88
1"	33.4	1.65	30.1	2.77	27.86					2.90	27.6	3.38	26.64	3.38	26.64	3.38	26.64			4.55	24.3	4.55	24.3	4.55	24.3
1 1/4"	42.2	1.65	38.9	2.77	36.66					2.97	36.26	3.56	35.08	3.56	35.08	3.56	35.08			4.85	32.5	4.85	32.5	4.85	32.5
1 1/2"	48.3	1.65	45.0	2.77	42.76					3.18	41.94	3.68	40.94	3.68	40.94	3.68	40.94			5.08	38.14	5.08	38.14	5.08	38.14
2"	60.3	1.65	57.0	2.77	54.76					3.18	53.94	3.91	52.48	3.91	52.48	3.91	52.48			5.54	49.22	5.54	49.22	5.54	49.22
2 1/2"	73.0	2.11	68.78	3.05	66.9					4.78	63.44	5.16	62.68	5.16	62.68	5.16	62.68			7.01	58.98	7.01	58.98	7.01	58.98
3"	88.9	2.11	84.68	3.05	82.8					4.78	79.34	5.49	77.92	5.49	77.92	5.49	77.92			7.62	73.66	7.62	73.66	7.62	73.66
3 1/2"	101.6	2.11	97.38	3.05	95.5					4.78	92.04	5.74	90.12	5.74	90.12	5.74	90.12			8.08	85.44	8.08	85.44	8.08	85.44
4"	114.3	2.11	110.08	3.05	108.2					4.78	104.74	6.02	102.3	6.02	102.3	6.02	102.3			8.56	97.18	8.56	97.18	8.56	97.18
5"	141.3	2.77	135.76	3.40	134.5							6.55	128.2	6.55	128.2	6.55	128.2			9.53	122.2	9.53	122.2	9.53	122.2
6"	168.3	2.77	162.76	3.40	161.5							7.11	154.1	7.11	154.1	7.11	154.1			10.97	146.4	10.97	146.4	10.97	146.4
8"	219.1	2.77	213.56	3.76	211.6			6.35	206.4	7.04	205.02	8.18	202.7	8.18	202.7	8.18	202.7	10.31	198.5	12.7	193.7	12.7	193.7	12.7	193.7
10"	273	3.40	266.2	4.19	264.6			6.35	260.3	7.80	257.4	9.27	254.5	9.27	254.5	9.27	254.5	12.7	247.6	12.7	247.6	12.7	247.6	15.09	242.8
12"	323.9	3.96	315.98	4.57	314.8			6.35	311.2	8.38	307.14	9.52	304.9	9.52	304.9	9.52	304.9	10.31	303.3	14.27	295.4	12.7	298.5	12.7	298.5
14"	355.6	3.96	347.68	4.78	346	6.35	342.9	7.92	339.76	9.52	336.56	9.52	336.6				11.13	333.3	15.09	325.4	12.7	330.2			
16"	406.4	4.19	398.02	4.78	396.8	6.35	393.7	7.92	390.56	9.52	387.36	9.52	387.4				12.7	381	16.66	373.1	12.7	381.0			
18"	457.2	4.19	448.82	4.78	447.6	6.35	444.5	7.92	441.36	11.13	434.94	9.52	438.2				14.27	428.7	19.05	419.1	12.7	431.8			
20"	508	4.78	498.44	5.54	496.9	6.35	495.3	9.52	488.96	12.7	482.6	9.52	489				15.09	477.8	20.62	466.8	12.7	482.6			
22"	558.8	4.78	549.24	5.54	547.7	6.35	546.1	9.52	539.76	12.7	533.4	9.52	539.8				15.88	527	22.23	514.3	12.7	533.4			
24"	609.6	5.54	598.52	6.35	596.9	6.35	596.9	9.52	590.56	14.27	581.06	9.52	590.6				17.48	574.6	24.61	560.4	12.7	584.2			

*INPIPE HIRE™* is a division of International Pipeline Products Limited

Contact *INPIPE HIRE™* on:  
 Tel: 01748 834577  
 Fax: 01748 836349  
 E-mail: [hire@inpipeproducts.co.uk](mailto:hire@inpipeproducts.co.uk)  
 Visit [www.inpipehire.com](http://www.inpipehire.com)

*INPIPE PRODUCTS™*  
 Walkerville Industrial Estate,  
 Catterick,  
 North Yorkshire,  
 DL9 4RR

# CONTACT US



Registered in England - 1852899