



THE DECK MACHINERY SPECIALISTS

**DELIVERING  
ROBUST  
SOLUTIONS**



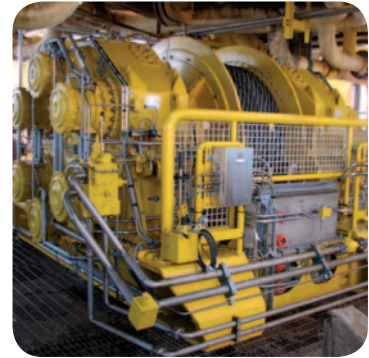
[www.ace-winches.co.uk](http://www.ace-winches.co.uk)

[www.ace-winches.no](http://www.ace-winches.no)



THE QUEEN'S AWARDS  
FOR ENTERPRISE:  
INTERNATIONAL TRADE  
2010

# ACE Manufacturing



**ACE MANUFACTURING** is a turnkey solution provider with a proven track record in the design, manufacture, testing and installation of high quality standard and bespoke winching equipment and deck machinery.

## **ACE Manufacturing:**

- > Bespoke Solutions – Design and Manufacture
- > Heavy Lift Winches – Single and Double Drum Configuration
- > FPSO Winches
- > Mooring Systems
- > A-Frames and Fast Winches
- > Dive Bell Winches
- > Riser Winches
- > Tugger Winches
- > Electric Winches
- > Linear Winches
- > Spooling Winch Packages
- > Hose Reelers
- > Chain Gypsy Winches
- > Zone 1 and Safe Area Electric Hydraulic Power Units
- > Zone 2 and Safe Area Diesel Hydraulic Power Units
- > Tagging Towers
- > Sheave Packages and Load Monitoring Equipment
- > On-Site Testing Facility
- > Active Heave Compensation Systems
- > Tensioner Systems

## **recently delivered projects**

### **Mooring Spreads**

- > CSL/Ferguson Modular 8-point Mooring System
- > KCA DEUTAG 8-point Mooring System

### **FPSO Systems**

- > BP FPSO Schiehallion Project
- > Shell FPSO Anasuria Turret Mooring Winch

### **Winch Solutions**

- > Heerema Tension Winch Package
- > Subsea 7 Brazil 50 Tonne Winch Package
- > Saipem Winch and Hose Reeler Packages
- > Dolphin Drilling 200 Tonne Spooling Winch Package

# ACE Hire Equipment



**ACE HIRE EQUIPMENT** supplies a comprehensive range of winch and deck machinery equipment for use on floating vessels, fixed offshore installations and land-based projects.

## **ACE Equipment Available for Hire:**

- > Over 400 Hire Units Worldwide
- > Hydraulic Winches from 2 to 250 Tonne
- > Single and Double Drum Configuration
- > Mooring Spreads
- > Towing Winches
- > Linear Winches
- > A-Frame and Fast Winch Packages
- > Spooling Winches
- > Umbilical Winches
- > Chain Gypsy Winches and Wildcats
- > Research Winches
- > Zone 1 Electric Hydraulic Power Units
- > Zone 2 Diesel Hydraulic Power Units
- > Safe Area Hydraulic Power Units
- > Hydraulic Air Blast Coolers
- > Generators
- > Sheave Packages and Load Monitoring Equipment
- > Synthetic Rope Systems
- > Bollard Pull Capabilities up to 700 Tonne
- > Deepwater Deployment Traction Winches
- > Test Weights
- > 750 Tonne On-Site Testing and Spooling Facility

## **recently delivered projects**

### **Platform Installations**

- > Talisman Claymore Caisson Project, North Sea
- > Maersk Curlew Disconnect, North Sea
- > Subsea 7, Peregrino Project, Brazil

### **Subsea Installations**

- > Reliance Industries Ltd, MA-D6, India
- > A&R Winch Packages, ExxonMobil, Aghami Field, Nigeria
- > Pyrenees Project, West Australia
- > Gypsy Winch Operations, Persian Gulf and Gulf of Mexico

### **Renewable Energy Installations**

- > Subocean, Polar Prince
- > Open Hydro, Bay of Fundy, Canada

# ACE Hire Personnel



**ACE HIRE PERSONNEL** offers multi-disciplined personnel who are qualified to commission and operate all types of deck and platform equipment worldwide.

## **ACE Contract and Service Personnel:**

- > Survey Engineers
- > Commissioning Engineers
- > Hydraulic Engineers
- > Mechanical Engineers
- > Electrical Engineers
- > Carousel, Powered Reel and Tensioner Operators
- > Winch Operating Technicians
- > Wire Spooling Technicians
- > Wire Rope/Lifting Gear Inspection
- > MPI Inspection
- > Wire Rope Socketing Technicians
- > Hose Reel Operators
- > Shift Supervisors
- > Offshore Riggers
- > Deck Crew
- > Naval Architects
- > Structural Design Engineers
- > Applications Consultants

## **ACE personnel are experienced in the following applications:**

- > Mooring System Operations
- > Umbilical Deployment
- > Heavy Lifting Operations
- > Flow Line Installations
- > Cable Laying Operations
- > Pipeline Pull-In Operations
- > Wire and Umbilical Spooling
- > Rigging and Inspection
- > Maintenance and Overhaul

**ACE Winches is a global leader in the design, manufacture and hire of hydraulic winches and marine deck machinery for the offshore oil and gas, marine and renewable energy, construction and cable lay markets.**

**ACE Manufacturing** is a turnkey solution provider with a proven track record in the design, manufacture, testing and installation of high quality standard and bespoke winching equipment and deck machinery. ACE Winches manufactures equipment to meet clients' specific accreditation and statutory requirements including DNV, Lloyds and ABS.

**ACE Hire Equipment** supplies a comprehensive range of winch and deck machinery equipment for use on floating vessels, fixed offshore installations and land-based projects. All equipment is subject to comprehensive FAT testing prior to despatch.

**ACE Hire Personnel** offers multi-disciplined personnel who are qualified to commission and operate all types of deck and platform equipment worldwide.

**ACE Project Solutions** – ACE Winches is a competent partner managing the total winch solution from design through manufacture, test, installation, commission, operation and ongoing customer support.

**ACE Service and Performance** – Delivering exceptional service and performance for our clients, in the world's harshest operating environments and always endeavouring to exceed clients' expectations.

**ACE Test Bed and Ships Bollard Pull Facilities** are unique services to our clients. ACE Test Bed Facility, in Aberdeenshire, is designed to accommodate up to 750 metric tonnes of load. The test bed allows a winch to be fully tested prior to working operations. Tests simulating virtually any static or dynamic working arrangements are available. Operating from our base at Dusavik, Stavanger we provide vessel bollard pulls up to 700 metric tonnes.

**ACE Health and Safety** – The company provides a systematic approach to identifying health and safety hazards and controlling the associated risks. ACE has embarked upon the formal process of registration and certification to the occupational health and safety management standard OHSAS 18001.

**ACE Environment** – ACE Winches has adopted the principles and practices of the internationally recognised environmental management systems standard ISO 14001. The standard provides a platform from which a business can systematically identify, prioritise and manage its environmental performance.

**ACE Quality** – The company has secured registration to the internationally recognised quality management system standard ISO 9001:2008. The standard extends to the design, manufacture, hire and commissioning of winches and associated deck machinery.



# ACE Winches

THE DECK MACHINERY SPECIALISTS

## Global Headquarters

ACE Winches  
Towie Barclay Works  
Turrieff Aberdeenshire  
AB53 8EN UK

t: +44 (0)1888 511600  
[www.ace-winches.co.uk](http://www.ace-winches.co.uk)

## Hire Equipment and Hire Personnel

ACE Winches  
Montbleton  
Banff Aberdeenshire  
AB45 3QJ UK

t: +44 (0)1888 511600  
[www.ace-winches.co.uk](http://www.ace-winches.co.uk)

## Norwegian Postal

ACE Winches Norge AS  
PO Box 4357  
4082 Stavanger  
Norway

t: +47 51 54 68 00  
[www.ace-winches.no](http://www.ace-winches.no)

## Norwegian Location

ACE Winches Norge AS  
Sothammergeilen 9  
Bygg 1, 4029 Stavanger  
Norway

t: +47 51 54 68 00  
[www.ace-winches.no](http://www.ace-winches.no)

