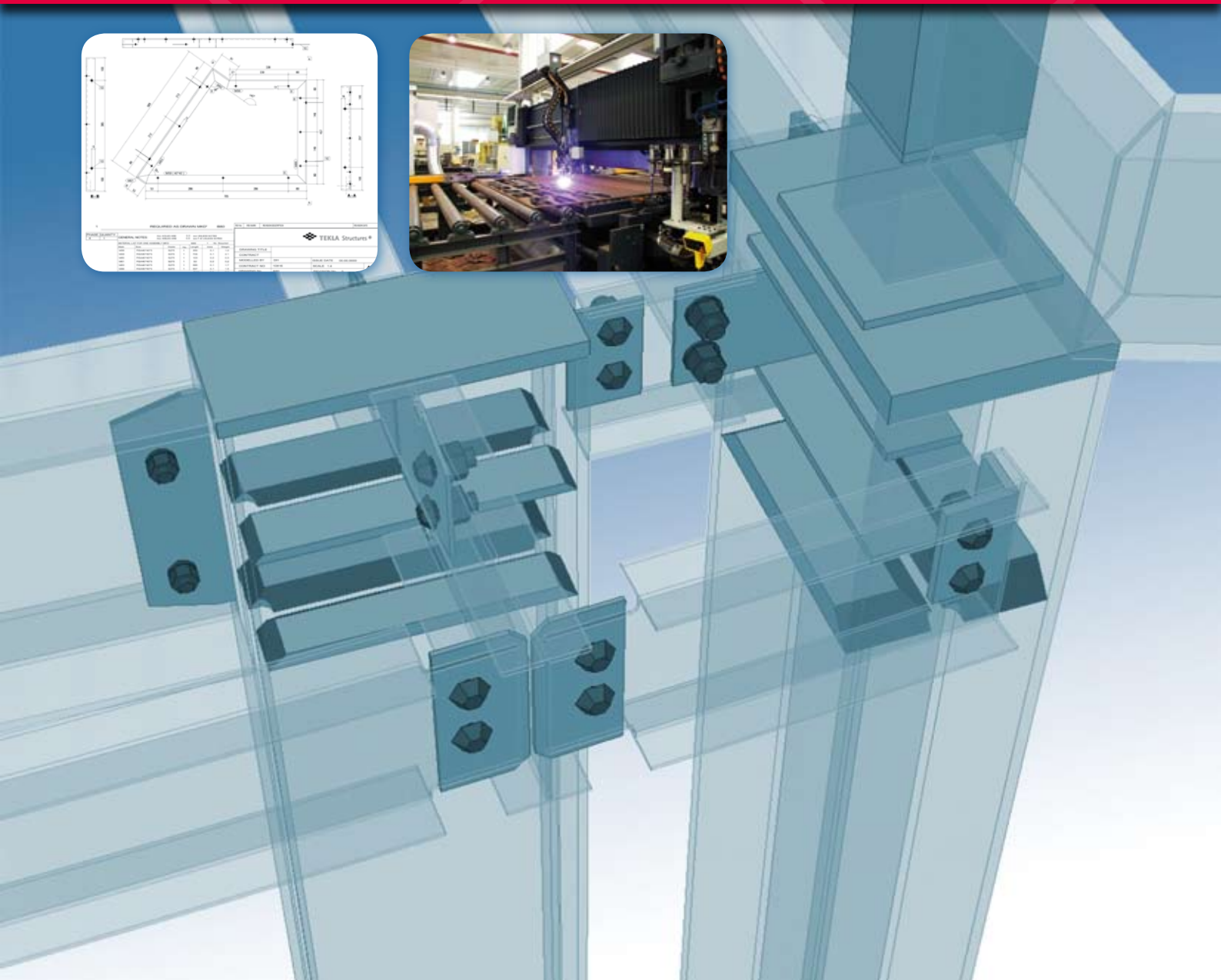
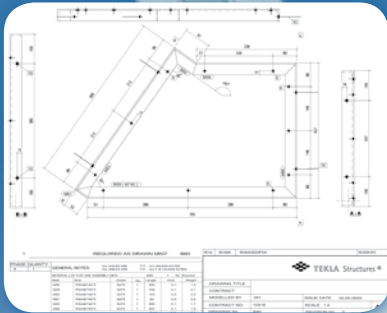




TEKLA® Structures

STEEL DETAILING & FABRICATION



Structures that Create Value



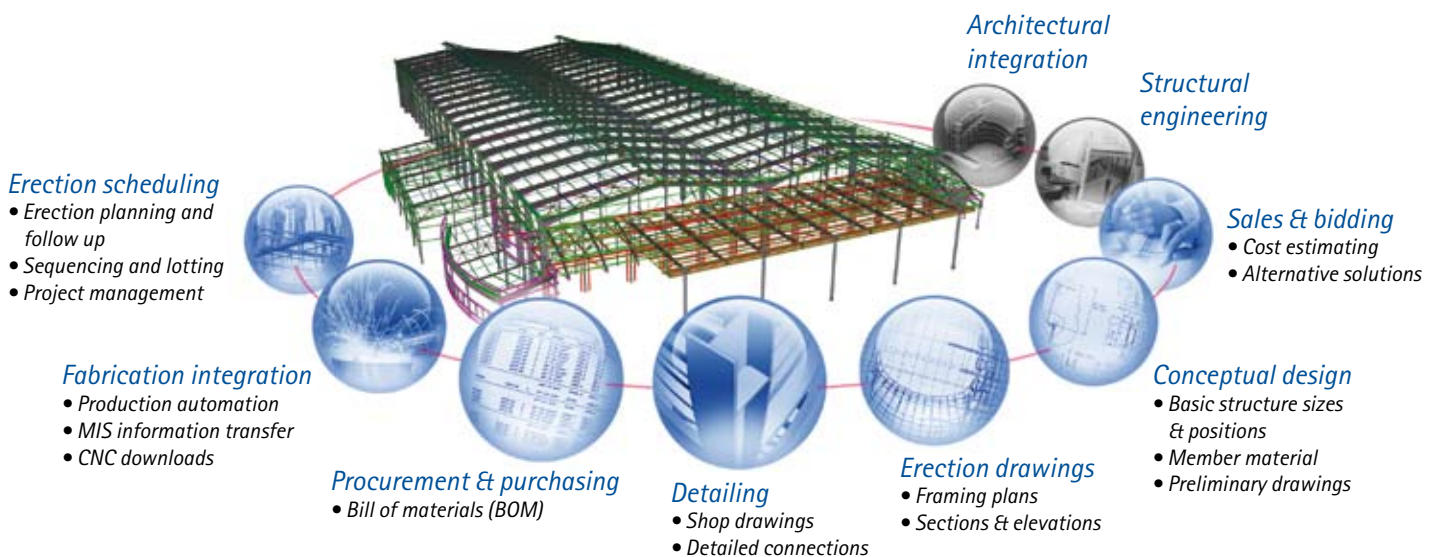
TEKLA Structures

REALISE YOUR FULL POTENTIAL

➤ Fierce competition? Tight deadlines? Last minute modifications? Back charges? Tekla Structures is the right solution for any job – large or small, complex or simple. Tekla Structures is a powerful and flexible 3D detailing and modelling software solution that integrates the entire workflow from sales and bidding to detailing, fabrication and erection.

For almost 40 years, Tekla has been providing steel detailers and fabricators with innovative tools to get the job done more efficiently and accurately. Tekla Structures is used by thousands of companies around the globe. Isn't it time you experience significant gains in productivity, accuracy and reliability?

Tekla Structures helps you to achieve more!



BETTER, FASTER, MORE COMPETITIVE

BENEFITS

Increase detailing quality

- Fewer errors in fabrication and erection
- Generate always up-to-date and accurate information
- Provide consistent detailing quality

Detail faster and more efficiently

- Eliminate duplicate work
- Reduced lead times
- Better information flow
- Increase detailing productivity

Improve workflow

- Integrated management tools – tighter control of jobs
- Collaborate and communicate better with other parties
- Record and track job history – visually

Enhance customer loyalty

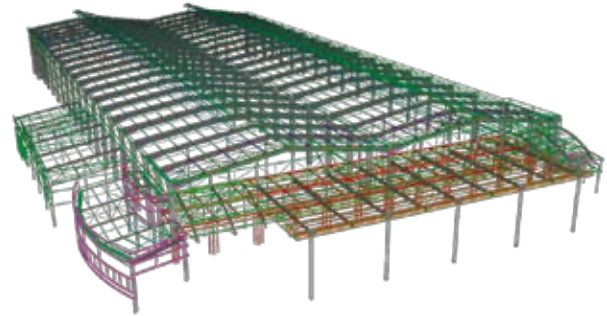
- Serve your customers better
- Allow for last minute changes with confidence
- Reduce risks for everyone

Be more competitive

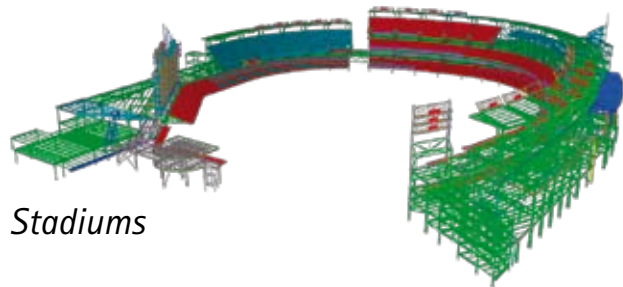
- Win more work with better bids
- Increase productivity
- Higher project quality throughout the jobs
- Improve customer satisfaction

MODEL EVERYTHING WITH TEKLA STRUCTURES

Model and detail any job and structure type
- large or small, complex or simple.



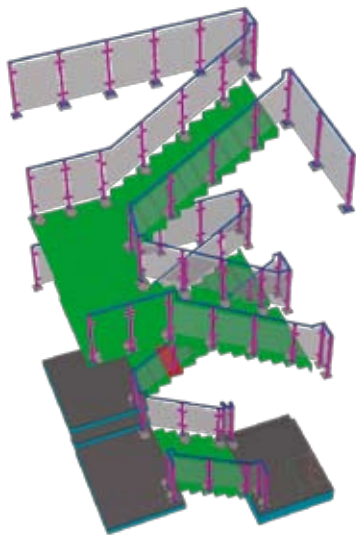
Commercial structures



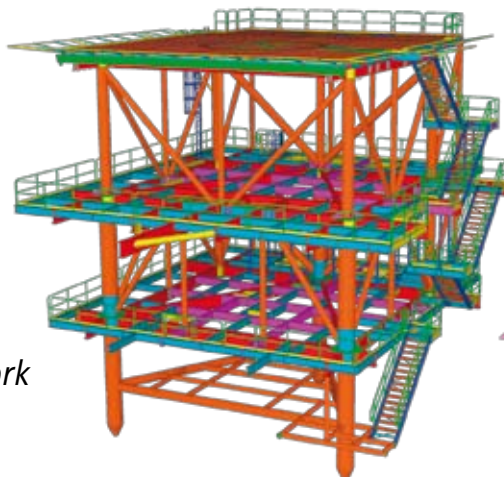
Stadiums



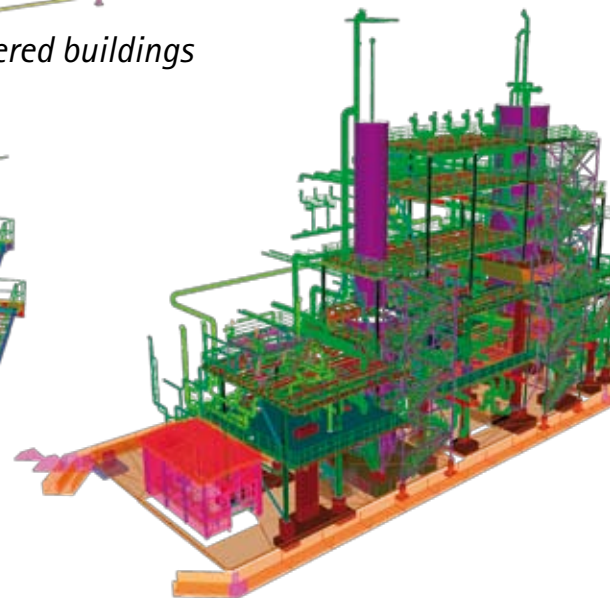
Pre-engineered buildings



*Miscellaneous metal work
including stairs, ladders,
handrails, balustrades
and sheet metal work*



Offshore platforms



Large industrial projects

WE COULDN'T HAVE SAID IT ANY BETTER...

> "From the onset of using Tekla Structures, it was apparent that no other detailing package could compete."

- David Ball, Detailing Group, US

> "Tekla Structures is phenomenal software."

- Larry Marsing, Utah Valley State College, US

> "As our structural design broadens, so do our business opportunities. Tekla Structures allows us to assess our clients' individual requirements so that accurate drawings are produced accordingly. This ensures a smooth and continuous fabrication process."

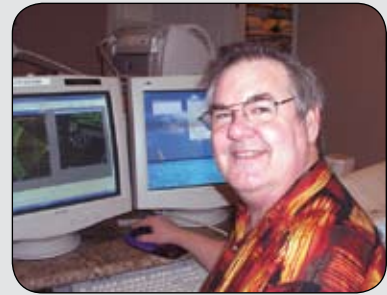
- James Sutcliffe, Sutcliffe Construction, UK

> "This detailing project wouldn't have been possible without a 3D model and a 3D interface, as only 3D technology enables you to truly understand how really complex geometries work. For this reason, the same 3D model was also utilised during fabrication – as a support media for the standard 2D shop and assembly drawings."

- Leandros G. Zeppos, Unison Engineering & Consulting, Olympic velodrome 2004, Greece

> "Without the power and flexibility of Tekla's 3D modelling system, many of the stadiums' complex structures would have been impossible to implement."

- Carlos Gil, Martifer, Euro 2004 Stadium, Portugal



"The first year with Tekla Structures proved to be successful. I was able to generate twice the work as previously turned out."

- Jerry Harrell, Harrell's Steel Detailing Service, US



"Tekla Structures has helped us to achieve more. Not only has our productivity increased, but our overall project quality has improved as well."

- Olson & Co Steel, US

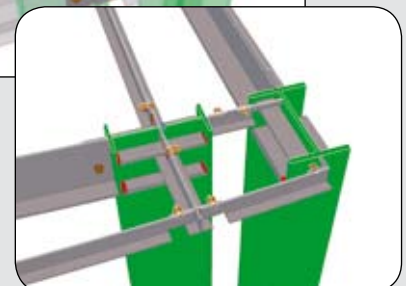
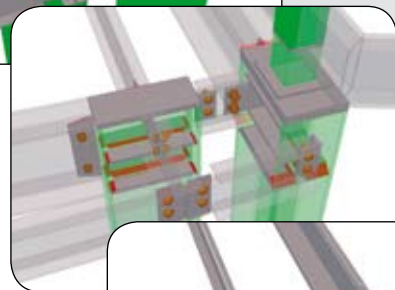
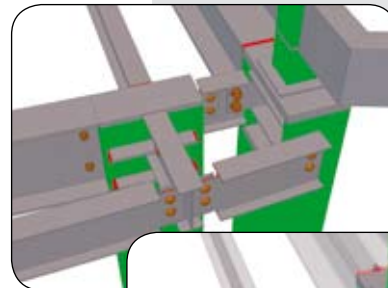
TEKLA STRUCTURES WORKS WITH:



Steel Projects



KALTENBACH

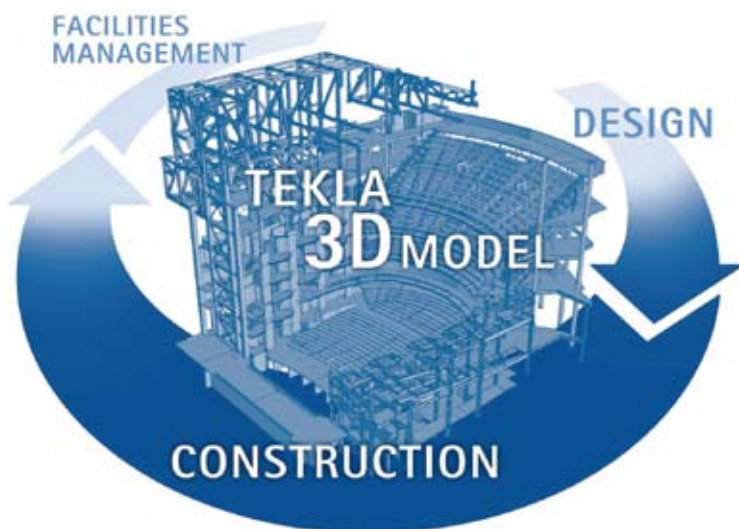


WANT TO KNOW MORE?

Tekla Structures encompasses specialised configurations for structural engineers, steel detailers and fabricators, precast concrete detailers and manufacturers, as well as construction companies. Thousands of Tekla Structures software users in more than 80 countries have successfully delivered BIM-based projects across the world. Every year Tekla invests up to 20% of revenue in R&D to provide you with the leading and most advanced solutions on the market. The Tekla team of skilled professionals provides all the technical support you need.

TEKLA CORPORATION

Tekla is an international software company whose model-based software products make customers' core processes more effective in building and construction, energy distribution, infrastructure management, and water supply. Tekla Corporation has area offices and partner organisations worldwide. International operations account for 85% of net sales. Founded in 1966, Tekla was one of the first software companies in Finland.



With Tekla, BIM means wider usage of the structural model: accurate and error-free coordination of every material in every stage of design and construction

CONTACT

Tekla (UK) Limited

Tekla House
Cliffe Park Way
Morley, Leeds
LS27 0RY

Tel. +44 (0)113 307 1200
Fax. +44 (0)113 307 1201
Email sales.uk@tekla.com

www.tekla.com/uk